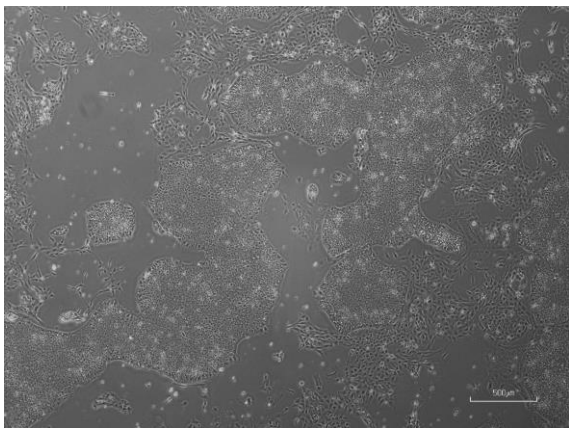
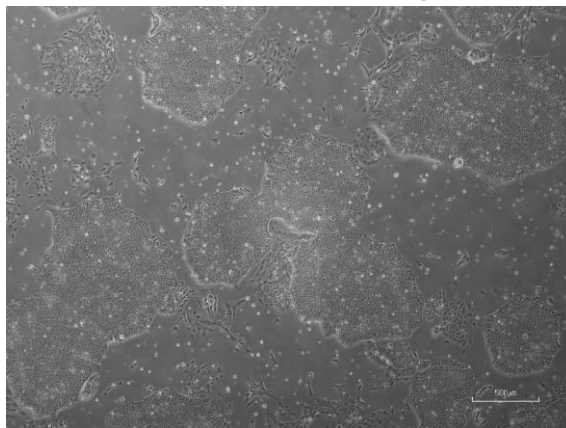


【 CiRA-jk-0053 】 Morphology of iPSC colonies

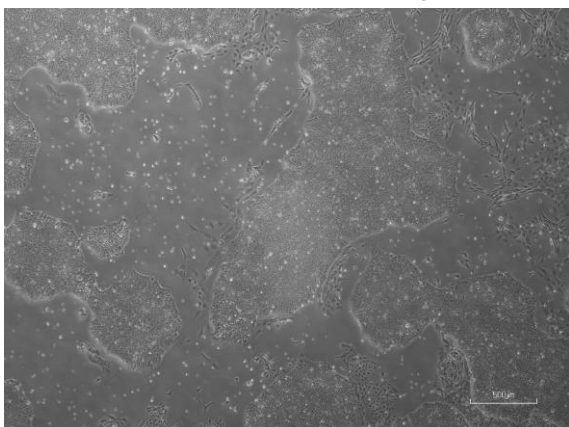
CiRA -jk-0053-A: passage-2



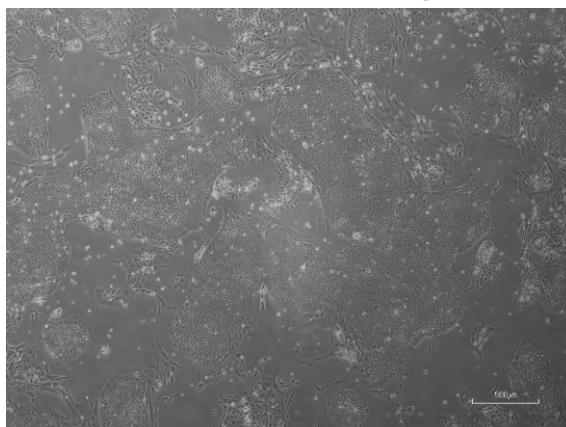
CiRA -jk-0053-B: passage-2



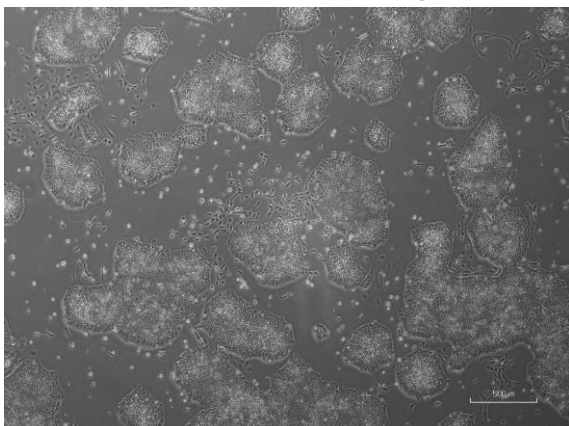
CiRA -jk-0053-C: passage-2



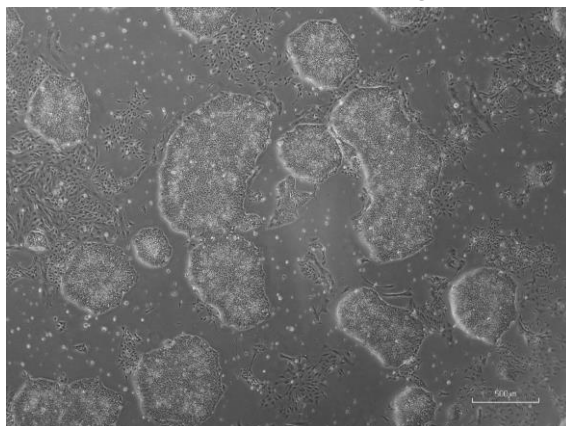
CiRA -jk-0053-D: passage-2



CiRA -jk-0053-E: passage-3



CiRA -jk-0053-F: passage-3



(All images were captured at 4x magnification)